



# The Navigator Way...



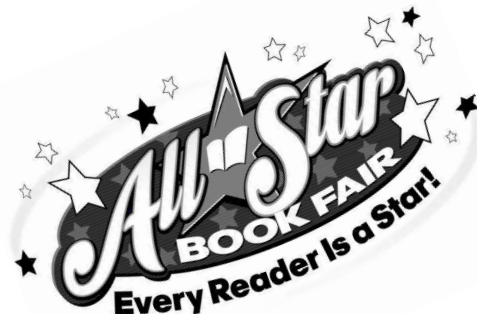
# PTSA News

## COME TO THE ALL STAR BOOK FAIR!

*WHERE EVERY READER IS A STAR!*

Help create brighter Stars by supporting your school and your student. Come to Emerald Park's Fall Book Fair.

There are many new and exciting books at the fair, including the Battle of the Books titles. **Hours are:**



**October 22<sup>nd</sup>: 8:30 am – 8:00 pm**  
**October 23<sup>rd</sup>: 8:30 am – 8:00 pm**  
*(Pizza Night/Bake Sale 5:30 – 7:00)*  
**October 24<sup>th</sup>: 8:30 am – 5:00 pm**  
**October 25<sup>th</sup>: 8:30 am – 2:00 pm**  
**October 26<sup>th</sup>: 8:30 am – 1:00 pm**

Visit our new Book Fair Homepage at  
<http://bookfairs.scholastic.com/homepage/emeraldpark>.



Don't forget to bring in your Box Top and Campbell Soup labels. You can put them in the box in the commons or send them in your white EP envelope.



## Volunteers are needed to ensure this year's book fair is a HUGE success.

We need:

- **4 volunteers** for set up on Friday, October 19<sup>th</sup> starting at 1:30 until 3:30 pm. (one volunteer needed at noon)
- **2 volunteers** are needed for each shift listed on the volunteer sheet that went home in your child's Friday folder. If you can work for even just an hour, please indicate that on the form and turn it in today!
- **4 volunteers** are needed for packing up the Book Fair on Friday, October 26<sup>th</sup>, starting at 1:00 pm. Packing up is easy and can be completed in about two hours, less time with more volunteers

Please contact Laura at [laura@kerr-us.com](mailto:laura@kerr-us.com) or call/text 253-653-4440

## CALENDAR OF EVENTS

- Oct. 22<sup>nd</sup> thru Oct. 25<sup>th</sup>—Book Fair
- Oct. 23<sup>rd</sup>—Pizza Night
- Nov. 1<sup>st</sup>—Skate Night (Auburn)
- Nov. 5<sup>th</sup> thru Nov. 19<sup>th</sup>—Fall Fundraising
- Nov. 15<sup>th</sup>—General Membership Meeting
- Nov. 15<sup>th</sup>—Craft Fair

# ----- YES! I WANT TO JOIN PTSA! -----

Name(s) \_\_\_\_\_

2nd Name (for family membership) \_\_\_\_\_

Phone \_\_\_\_\_ E-mail \_\_\_\_\_

Address \_\_\_\_\_

Child(ren) \_\_\_\_\_ Teacher \_\_\_\_\_

\_\_\_\_\_ Teacher \_\_\_\_\_

## MY MEMBERSHIP FEES ARE ENCLOSED WITH THIS FORM:

☐ \$10 Individual Member      ☐ \$18 Family (two adults in same household)

☐ \$20 I am unable to volunteer my time, so please put me on the "No Call" list but I want to support our school.

Please fill out this form and return to school with your child along with a check to **EMERALD PARK ELEMENTARY PTSA.**

## Visit the Emerald Park PTSA website at: [epptsa.weebly.com](http://epptsa.weebly.com)

### Pizza Night & Bake Sale:

**Tuesday, October 23rd<sup>th</sup>,  
from 5:30 – 7:00 pm.**

Take a break  
from cooking  
and join us for  
dinner.



Papa John's Pizza -  
\$1.00 per slice

Soft drinks, Hawaiian punch  
& water—  
\$0.50 each.

We will also be selling :



A wide selection of items will  
be offered at the Bake Sale,  
prices will vary.

### ONE FOR BOOKS FUNDRAISER

Our One for Books Fundraiser has begun  
and will continue until the end of our  
Spring Book Fair in February.

This is one Fundraiser where you dollar is  
worth so much more. Every dollar we  
raise has at least \$1.65 of spending power and generates a book to be do-  
nated by Scholastic in Emerald Park's name to one of two charities.

In the past we have provided a book to every child receiving extra help in  
reading. As we would like to reach even more kids, this year our goal is to  
raise over \$800. Please consider making a donation to this great cause.

### Bake Sale Donations:

If you would like to provide goods for the bake sale please contact Laura at  
[laura@kerr-us.com](mailto:laura@kerr-us.com) or call 253-653-4440.

All donated goods need to be delivered to Emerald Park no later than 4:00  
pm on Tuesday, October 23rd.

All proceeds from the bake sale will go towards the **One for Books  
Fundraiser.**





## JOG-A-THON WRAP-UP!

Ready, Set, Go!! We all had a great time at this year's Jog-A-Thon.

THANK YOU to all the volunteers that helped ensure the students had a fun and healthy time. Because of everyone's efforts, we were able to raise over \$5,000 for Emerald Park!! Woo Hoo!

Prizes were awarded to many of the participants and came home in their white envelopes the day of the jog-a-thon. T-shirts for those that raised over \$25 will be coming home soon. Thank you again to all that participated, donated, and volunteered. Thank you to our community partners that sponsored this event.

Also like to thank the committee members that made it all possible: Karen Sims, Heather Scheer, Andrea Hartman, Hector Torres, Irene Aguilar, Diane Hanratty, Lori Macauley, and Stephanie Lyons.

## FALL FUNDRAISER—COMING SOON!



Fall Fundraiser catalogs ***will be starting Nov. 5th and going through November 19th.*** The funds raised will help us support the school by helping to provide school assemblies, bus transportation, field trips, and much more.

If you'd like to check out some of the items that will be available, please go to [www.nwfundraising.com](http://www.nwfundraising.com). Under Fundraising Catalogs, click the catalog with the lady holding the gift. Catalogs and order forms will come out in your child's Friday envelope at the end of this month.



## UPCOMING SMENCIL SALE DATES:

- ⇒ October 19th
- ⇒ November 16th
- ⇒ January 18th
- ⇒ March 22nd
- ⇒ May 17th

**A variety of  
flavors each  
for \$1**

Sold BEFORE  
school in the  
cafeteria





## *SUPERMALL'S MAGICAL NIGHT OF GIVING*

*SUNDAY, NOVEMBER 11TH*

*6:30PM—10:30PM*

A great night of shopping and holiday fun combined with a great opportunity to raise money for Emerald Park.

Tickets are \$5 and all the proceeds go to our school.

This special evening features:

- ♦ 4 hour shopping extravaganza
- ♦ One night only special sales
- ♦ Santa's official arrival & parade
- ♦ Over \$20,000 in door prizes
- ♦ Holiday entertainment and more

This is a great opportunity to kick enjoy the holiday spirit and support our school.

More information to come out in the Friday envelopes.

### **EMERALD PARK CRAFT FAIR—NOVEMBER 15TH**

Calling all crafters...

Emerald Park will be having it's annual craft fair on November 16th.

**Silver— \$25:**

**includes table at event**

**Gold—\$35:**

**includes table at event, individual membership in PTSA, and an ad  
in the December issue of this newsletter.**

To sign up for a table, please contact Karen Sims, via email at [karensims001@yahoo.com](mailto:karensims001@yahoo.com) or 253-856-7933.



## **PTSA REFLECTIONS PROGRAM**

Take part in the PTSA Reflections Program!

The theme for this year's Reflections contest is

**“The magic of a moment...”**

and all Emerald Park students are encouraged to participate!

To enter all you need to do is pick up an entry form from the turnstile outside the office and then follow the specific directions for the category you are entering.

The 6 categories are: dance/choreography, film/video, literature, musical composition, photography, and visual arts (includes art forms such as drawing, painting, print making & collage).

Your project is due to the office by Monday, November 5, 2012.

Questions? Contact Susan Kipper at (253)854-1631 or e-mail at:  
[skipper@kentmethodist.com](mailto:skipper@kentmethodist.com)

*We look forward to seeing your creativity expressed!*



PTA REFLECTIONS  
40 Years of Achievement in the Arts

**PTA® Reflections**  
**unleashes**  
**your artistic talents**

Dance Choreography

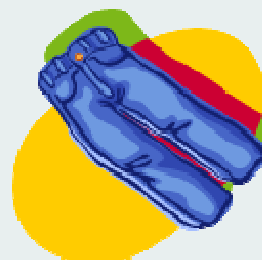
Photography

Film Production

Musical Composition

Literature

Visual Arts



5

## **FALL CLOTHING DRIVE—COMING SOON!**

Emerald Park Elementary will be reaching out to help our local KAC PTSA families with donations this fall. Please start setting aside your new or gently used items for our local families in need.

You can drop off your donations in the Common's Room from

***Nov. 26th—Dec. 7th***

*Donations needed:*

*New Socks and New underwear*

*Gently used coats, gloves, scarves, shoes, sweatshirts, jeans, school supplies and plastic hangers*

Any questions please email:

Lorrie Kiminki at [plkiminki@gmail.com](mailto:plkiminki@gmail.com).

IF YOUR FAMILY NEEDS THE SERVICES OF THE CLOTHING BANK, PLEASE COME INTO THE EMERALD PARK OFFICE TO SIGN UP.

## NEWSLETTER ADVERTISING

Have something you need to advertise? This newsletter is received in over 400 local homes monthly!

Newsletter Advertising is open to EP PTSA Members only.

Prices:

\$5 for 1/8 page

\$10 for 1/4 page

\$15 for 1/2 page

Contact Diane  
dhanratty  
@sleepcountry  
or 206-419-9633

\$5	\$10
\$5	
\$15	



## NEW ONLINE BOOK FAIR

Emerald Park's Online Book Fair, which is part of our in school Book Fair, will run from October 10<sup>th</sup> thru November 3<sup>rd</sup>.

All sales thru the Online Book Fair will count towards our Book Fair Sales, with the scholastic dollars earned going to our school library.

On the EP PTA home page (epptsa.weebly.com) you will find a link to the Book Fair homepage and from there a link to the Online Book Fair; or you may go to <http://bookfairs.scholastic.com/homepage/emeraldparkelem>.

Click on the On-line fair button. **The Online Book Fair contains more titles than we are able to get in our fair at the school. Students are able to make wish lists and e-mail them to their grandparents.** All purchases are shipped FREE to the school after the Online Book Fair closes.



## UPCOMING POPCORN SALE DATES:



- ◆ November 9th
- ◆ December 7th
- ◆ January 4th
- ◆ February 1st
- ◆ March 1st
- ◆ April 5th
- ◆ May 3rd
- ◆ June 7th

You can still purchase bags for \$0.50 each on the day of each sale in the cafeteria or purchase 3 bags for \$1.00.

Example: pay \$1 for Oct /  
Nov / Dec

## Your 2012-2013 PTSA Board

### President

Lori Macauley- 253-850-8113

### Co-VP Fundraising

Karen Sims - 206-369-5608

### Co-VP Programs

Cyndi Helmer - 206-999-1675

### Secretary

Suzanne Schack - 253-630-0884

### Treasurer

Christy Martin - 253-740-2091

### Cashier

Heather Scheer - 206-650-4358

### School Improvement Team

Leslie Delfin - 206-605-1817

### Membership Chair

Kaylee Hansen - 253-854-3496

### Newsletter Chair

Diane Hanratty - 206-419-9633

### Website Design

Dee McSweeney - 586-549-6900

### Principal

Dean Ficken - 253-373-3850

### Staff Representative

Stephanie Lyon - 253-373-3850

### Publicity Chairs

Irene Aguilar and Hector Torres  
209- 712-4007 / 206- 214-5224

*Have a question? Give us a call!*