

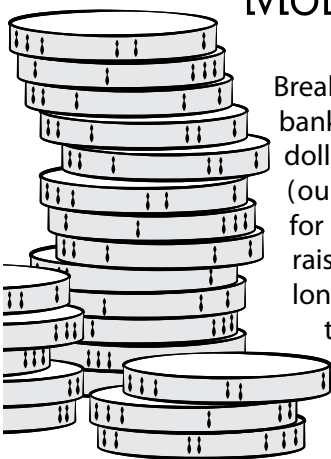


PTSA News

THE EMERALD PARK COMPASS Vol. 13 • Issue 9 • Local Unit #9.7.29 • Kent, WA • May 2012

Coin Drive

Monday–Friday • May 14–18th



Break open that piggy bank and raise a few dollars for Emerald Park (our last mini-fundraiser for the year.) Funds raised go toward the long list of great activities and supplies the PTSA provides for our Emerald Park staff and students.

Bring in pennies to put into your class collection jug. You can also bring in nickels, dimes, and quarters to put into another classroom's collection jug to "attack" them. ***Pennies count toward the classroom total and silver coins count against the classroom total.***

The classroom with the highest penny value (minus the silver value) will receive an Ice Cream Treat!

Whose classroom will you "attack"??

School Needs

The PTSA is not able to foresee or cover all extra school supply needs in the budget—but we can pass on a note to you. If you're able to donate, the school is currently in need of:

**Glue Sticks
Pencils & Kleenex**

Thanks if you can!

May 10Skate Night

May 14–18....Coin Drive

May 7–11 Staff Appreciation

June 1EP Carnival!! Fun!

AHOY, NAVIGATORS CARNIVAL!

The carnival is getting closer!

We can't wait! We really need more volunteers to help make this year a success. Parents, middle school students and high school students are needed to help:

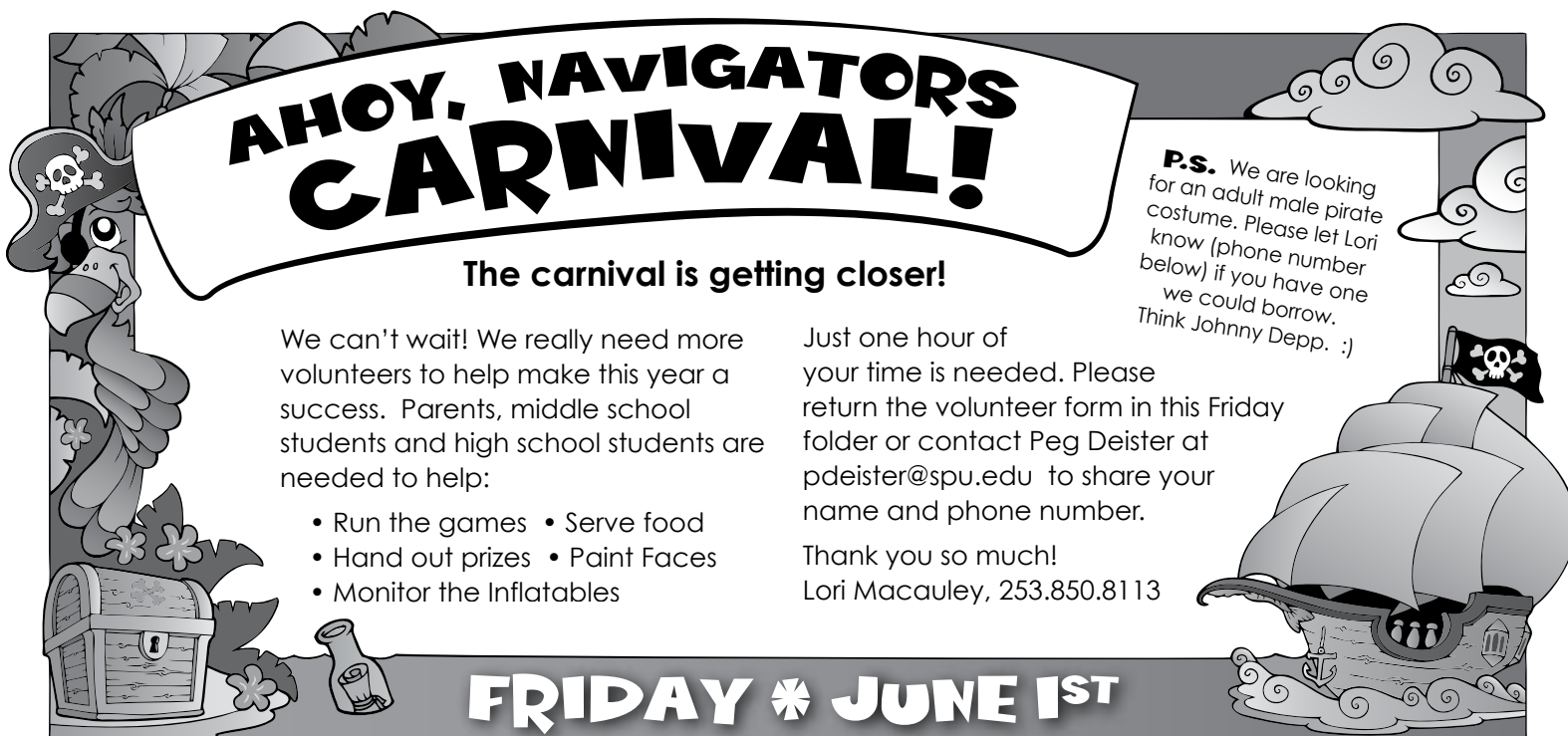
- Run the games • Serve food
- Hand out prizes • Paint Faces
- Monitor the Inflatables

Just one hour of your time is needed. Please return the volunteer form in this Friday folder or contact Peg Deister at pdeister@spu.edu to share your name and phone number.

Thank you so much!
Lori Macauley, 253.850.8113

P.S. We are looking for an adult male pirate costume. Please let Lori know (phone number below) if you have one we could borrow. Think Johnny Depp. :)

FRIDAY * JUNE 1ST



Visit our PTSA website at
epptsa.weebly.com



Let's Say Thank You in a Big Way!

Staff Appreciation Week May 7-11th

PTSA Board Members

CO-PRESIDENT

Lori Macauley253.850.8113

CO-VPs OF FUNDRAISING

Karen Sims253.856.7933

Jenny Pigott253.850.4197

CO-VPs OF PROGRAMS

April Dinius206.293.6071

Heather Scheer253.631.0547

MEMBERSHIP

Kaylee Hansen253.854.3496

SECRETARY

Suzanne Schack 253.630.0884

TREASURER

Peg Deister253.639.0087

CASHIER

Laura Kerr 253.653.4440

NEWSLETTER & PUBLICITY

Sheila Cowley253.639.3122

WEBSITE

Donna Lund pdehome@msn.com

SIT TEAM REPRESENTATIVE

Leslie Delfin253.630.8917

PRINCIPAL

Dean Ficken253.373.3850

STAFF REPRESENTATIVE

Stephanie Lyon253.373.3850

LEGISLATIVE CHAIR

OPEN

It's time to show our appreciation to our amazing staff at Emerald Park! Our children are surrounded every single day by a caring and capable staff that goes the extra mile to ensure that our kids are receiving the best possible education!

During the week of **May 7-11** the PTSA will be hosting a variety of different activities to honor our teachers and

staff. However, we would also like to encourage each family to take time to thank their child's individual teacher and or support staff. It doesn't take much to say thank you. For some amazing and creative appreciation ideas visit update@ptotoday.com.

Take the time to thank your teachers for all the time they take to impact and influence your kids!

Outstanding in Many Ways!

Outstanding Educator and Volunteer Awards Given

Thank you to all the students, parents, and staff for taking the time to nominate someone for our Outstanding Educator and Volunteer Awards.

Congratulations to **Mr. Martin** as our Outstanding Educator this year! On top of doing an excellent job in the classroom year in, year out, he has also been working toward his National Boards. Way to go Mr. Martin! Thank you for your positive influence on so many young minds!

Like the Educator Award, we had many great nominees for the Volunteer Award! It was hard to choose just one, so this year (as happens at times) the Award goes to **Peg Deister** and **Annette Wong**. Thank you both for your tireless efforts in the classroom and on PTSA events and activities!

Thank you Heather for coordinating these Awards! —PTSA Board

Fun at Bingo Night!


Bingo night was great!! We had about 120 people in attendance. A special thank you to Mr. Abernethy and Mr. Lofstrom for being our callers, and thanks to Mr. Martin who stepped in when Mr. Abernethy had to leave.

Of course we couldn't have done it without our many volunteers. So thank you to those who helped out at the event and to those who donated prizes as well.

Thank you Jenny for coordinating a fun Bingo Night! —PTSA Board

EMERALD PARK PTSA

SKATE NIGHT



MAY 10TH

THURSDAY 6:30-8:30 PM

WEAR YOUR EMERALD PARK SHIRTS OR E.P. COLORS!

\$5.00 admission includes skates.

(No charge for non-skaters coming to watch.)

AUBURN SKATE CONNECTION

1825 Howard Rd, Auburn * 253.833.4990

Welcome 2012-2013 PTSA Board

Congratulations and welcome to the new 2012-2013 Emerald Park Elementary PTSA Board! Thank you for stepping up and sharing your time and talents with us!

President

Lori Macauley

Co-VP's of Fundraising

Karen Sims & Dee McSweeney

Co-VP's of Programs

Cyndi Helmer & Jane Uyeta

Secretary

Suzanne Schack

Treasurer

Christy Martin

Cashier

Heather Scheer

Membership Chair

Kaylee Hansen

School Imprvmnt Team

Leslie Delfin

Newsletter Chair

Diane Hanratty

Publicity Chairs

Hector Torres & Irene Aguilar

Website Chair

Donna Lund

Principal

Dean Ficken

Staff Representative

(To Be Determined)

We are so excited for next year! What a great group of folks! We will continue to look for volunteers to help us out on a number of programs. So, please come join in on the fun!

Kristen's Babysitting Service

Need a friendly, experienced babysitter?
Then I'm the babysitter for you!

- I am a Junior at Kentwood
- Completed American Red Cross Babysitter's Training Class
- Current American Red Cross CPR & First Aid certification
- Experienced with preschool aged children and older
- Hours available: school days after 4pm, weekends, Kent School District non-school days
- Reasonable rates

Contact Kristen at 253.638.0819

Interested in Girl Scouts?

Our 3rd grade troop has openings!

Our troop of 3rd grade girls from Emerald Park & Soos Creek schools meets two Wednesday evenings per month during the school year at Soos Creek Elementary. To find out more about

Girl Scouts' fun activities, events, and camps, visit www.girlscoutswv.org.



Registration is on now for next year, so please contact either of us as soon as possible if you're interested or have questions:

Dee McSweeney at msweety3@gmail.com, 586.549.6900 or Donna Lund at pdehome@msn.com, 253.630.5822.

YES! I WANT TO JOIN PTSA!

Name(s) _____

2nd Name (for family membership) _____

Phone _____ E-mail _____

Address _____

Child(ren) _____ Teacher _____

_____ Teacher _____

MY MEMBERSHIP FEES ARE ENCLOSED WITH THIS FORM:

☐ \$10 Individual Member ☐ \$18 Family (two adults in same household)

☐ \$20 I am unable to volunteer my time, so please put me on the "No Call" list but I want to support our school.

Please fill out this form and return to school with your child along with a check to **EMERALD PARK ELEMENTARY PTSA**.

Don't miss this one! We only do it once a year rain or shine.

• Kids clothes and toys • Kitchen and household items • Collectables • LOTS and LOTS and LOTS of clothes • Much, much more!

FRIDAY ★ MAY 11TH

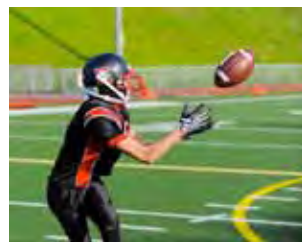
7am to 5pm (start looking at 6:30am)
22120 116th Ave SE • Kent, WA 98031

kentgaragesale@comcast.net

For more info and reminders we can add you to our email list!

**HUGE MULTI-FAMILY
GARAGE
SALE**

Kent Knights Jr. Football & Cheerleading



Sign up at Kentlake High School, 21401 SE 300th St Kent

Tuesday, May 15th, 6:00pm–7:00pm

Football: 7–14 years old w/ no weight limits • Cheer: 7–15 years old



Learn teamwork, sportsmanship & the game of full-contact tackle football. Be a part of an organization that has been in the Kent/Covington Community over 30 years!

For more info: visit www.kentknights.com or Email info@kentknights.com

NEWSLETTER ADVERTISING You must be an Emerald Park PTSA Member to advertise.

\$5 for 1/8 page, \$10 for 1/4 page, \$15 for 1/2 page Contact Sheila at 253.639.3122 or kentcowleys@comcast.net

